



2023 AGM WELCOME!



Agenda

- 7:45 Welcome and Introductions
- Election of officers and committee
- Member's motion
- Treasurer's report
- Chair's report and review of the year
- Questions from the membership
- 8:30 BREAK (hot drinks and cake)
- 8:45 The National Cycle Network presentation
- 9:15 CLOSE

Committee proposed

- Martin Aldred
- James Bailey (Treasurer)
- Jean Baird
- Ian Dent
- Simon Paul
- Ken Timmis (Chair)
- Secretary role is vacant, Spaces on committee for other volunteers

Motion proposed

Modify the constitution to:

replace all references to “Chairman” with “Chair”.

Amend:

“In the event of the group being wound up, any funds remaining after payment of due debts, and any other assets shall be donated to a group which includes similar objects or, failing that, to the Cyclists Touring Club”

to:

“In the event of the group being wound up, any funds remaining after payment of due debts, and any other assets shall be donated to a group which includes similar objects or, failing that, to the local chapter of Cycling UK (CTC Derby and Burton)”



Treasurer's Report

James Bailey



Chair's Report and Review of the Year

Ken Timmis



National Cycle Network – a local and personal view

Ian Dent

Who am I?

- Local Sustrans volunteer
- Various DCG roles – Membership Sec, Webmaster, Treasurer
- Member of Sustrans Paths for Everyone Stakeholder Group – Midlands and East
 - Mainly local authorities
 - Others such as National Trust, Canal&River Trust, British Horse Society, National Highways, ...
 - Represent the Sustrans volunteers
- Involved in various map related projects – Derby Tube Map, Cycle Derby Active Travel map

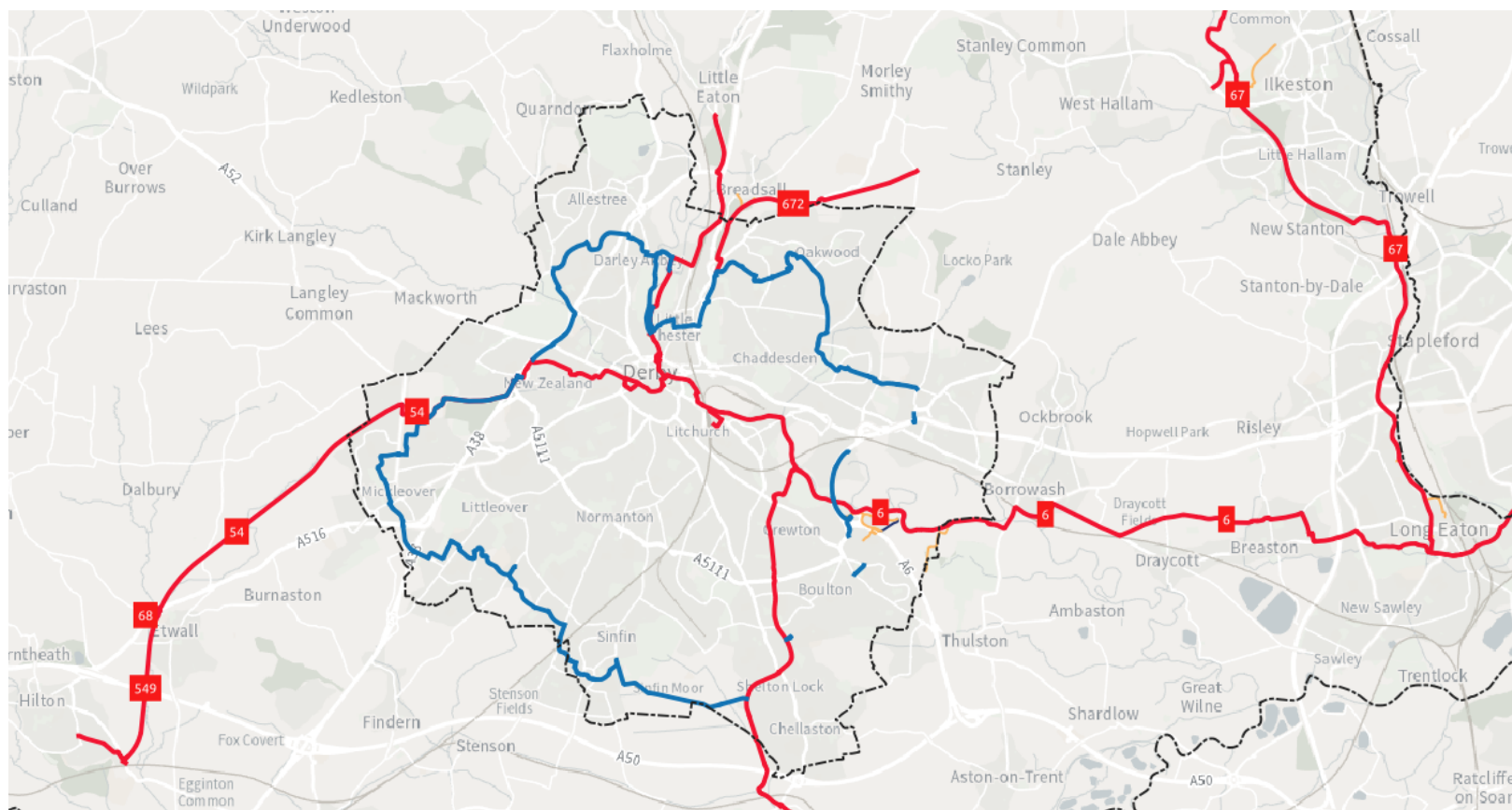
National Cycle Network

- 12,700 miles (Nov 21)
- Details can be found on Ordnance Survey Maps
 - <https://explore.osmaps.com/ncn>
- Ownership generally not Sustrans
- On road and off road (one third traffic free)
- Cycle routing apps “prefer” NCN



Local NCN

- National and Regional (R66)



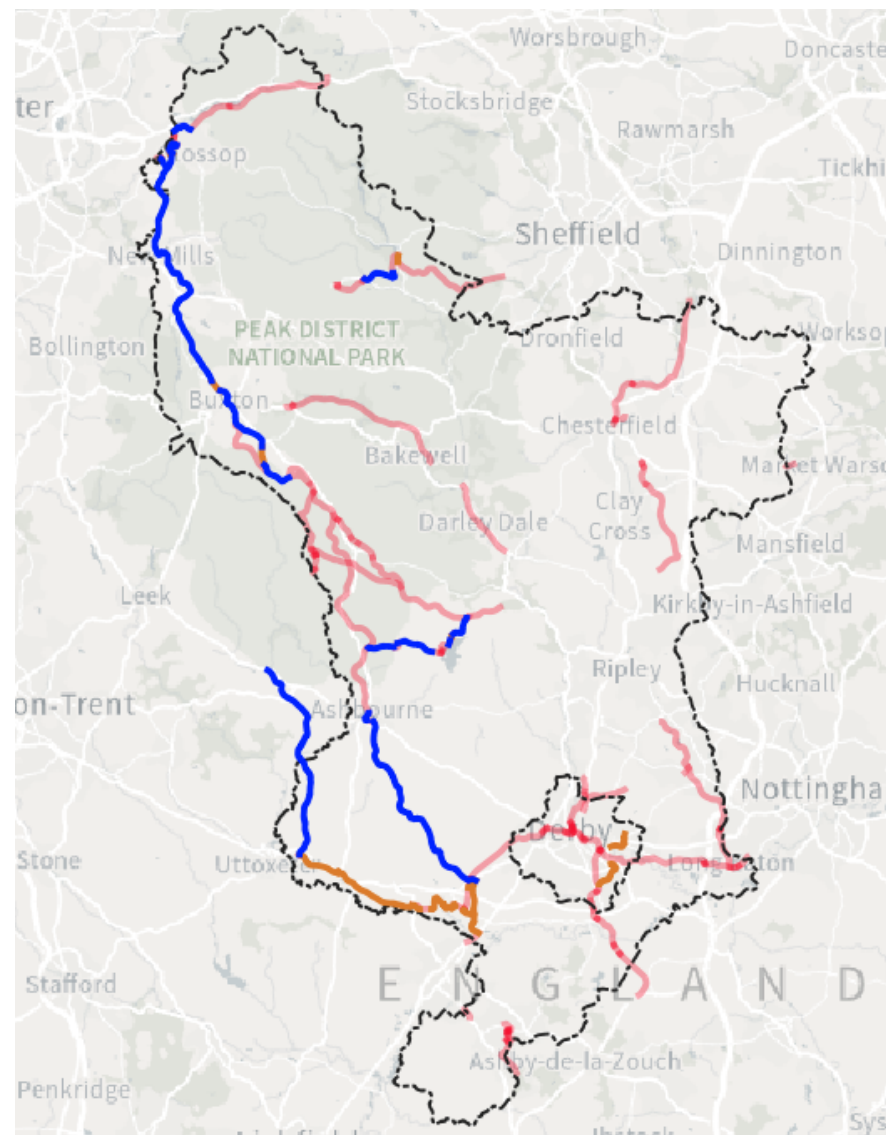
“Recent” changes

- 3733 miles removed or reclassified
- Reclassification
 - Still retained as important routes
 - Not managed by Sustrans and not part of the NCN
- Removal
 - Not sufficiently good quality / “dangerous”
 - Generally on road, 60mph sections
 - Still lots of poor quality sections
 - Based on survey in 2017-ish



Removed and reclassified

- Reclassified (**blue**)
- Removed (**orange**)
- Impact
 - Disconnected sections
 - Selection not always sensible (or correct)



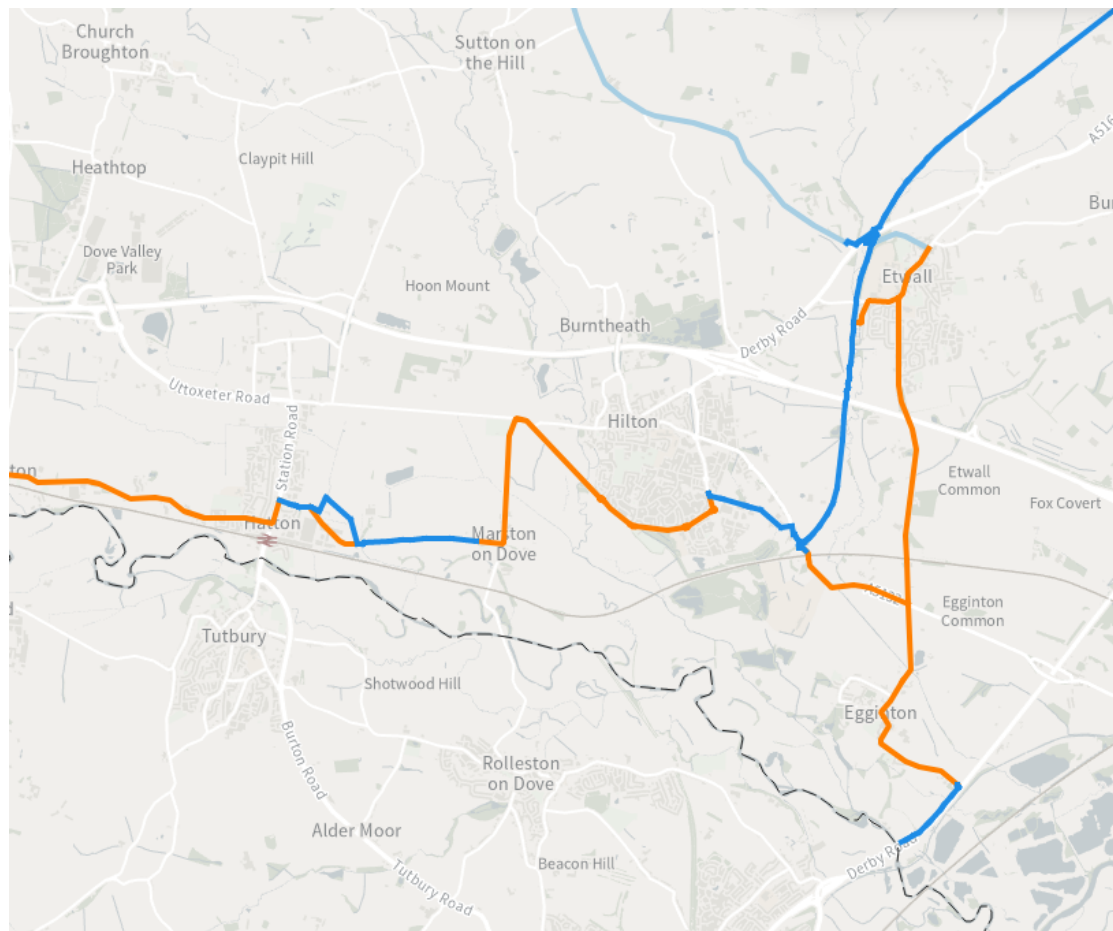
Removed sections

- Need for re-signing – in progress elsewhere in UK
 - Blank over NCN number
 - Sign completely removed
- Maps need updating – Google, Bing, OpenStreetMap,...
- Network is often now not a network



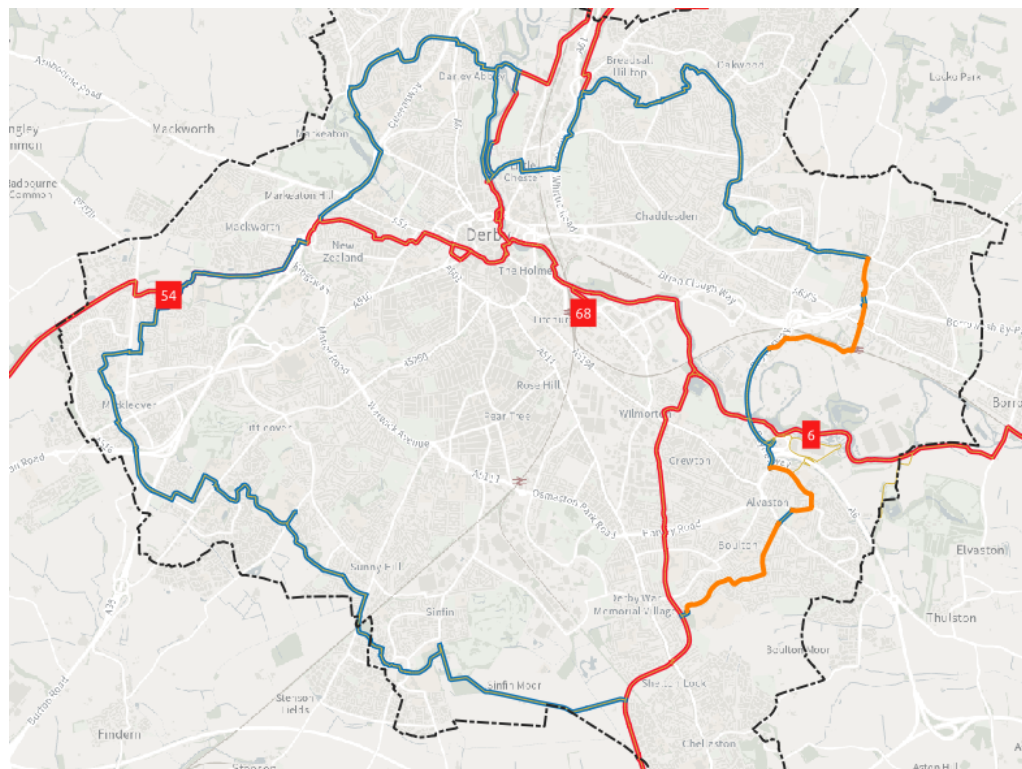
Etwall area

- Disconnected sections
- Link to Etwall is “reclassified”
- Quiet road through Egginton village is removed
- Alongside A38 to Burton is retained



Regional route 66

- Designed to connect to schools
- Sections removed
 - Steps on A52 bridge still part of NCN!



Reclassified sections

- Ex NCN
 - Fast and/or busy roads – not suitable for beginners or families
- “valued, named routes”
 - Locally – Pennine Cycleway (NCN 68 via Ashbourne)
- Need for re-signing to new branding – new stickers / new signs
- Need for new “owner” responsible for route, signing, management
 - Maybe Council but not for long distance routes with many Councils

-
- The map displays the A50 road network and surrounding areas in Leicestershire and Lincolnshire. Key locations and features include:
- Towns and Villages:** Trusley, Mickleover, Kingsway, Allestree, Draycott, Hilton, Willington, Stenson Fields, Pear Tree, Sunnyside, and Draycott.
 - Roads:** A52, A516, A38, A50, A608, A6096, A5132, and B5010.
 - Key Features:**
 - Horse Step-over:** Located near Trusley, Mickleover, and Draycott.
 - Multiple bollards:** Found at various points along the A50, including near Kingsway and Draycott.
 - Single bollard:** Located near Kingsway and Draycott.
 - A-frame:** Located near Mickleover and Draycott.
 - Gate:** Located near Mickleover and Kingsway.
 - Tight turn:** Located near Mickleover and Kingsway.
 - Steep slope/ramp:** Located near Draycott.
 - Chicane:** Located near Draycott.
 - Pinch-point:** Located near Draycott.
 - York barrier:** Located near Draycott.
 - Other:** Located near Draycott.
 - Removed:** Located near Draycott.

Barriers

- A frame & K frame!
- Sustrans funding from DfT for (some) removal
- Derby City doing decent job of removal (on NCN)
- Mickleover Gates
 - Thanks due to Derbyshire Countryside Service



Millennium Mileposts

- 4 different designs
- 5 different Platonic solids
- 6 series of Time Discs
 - 4 seasons, 6 continents, 8 ages of man, 12 signs of the zodiac, 20 centuries + elusive 6th series
 - Puzzle to be solved from discs
- Meant to be 1000 posts



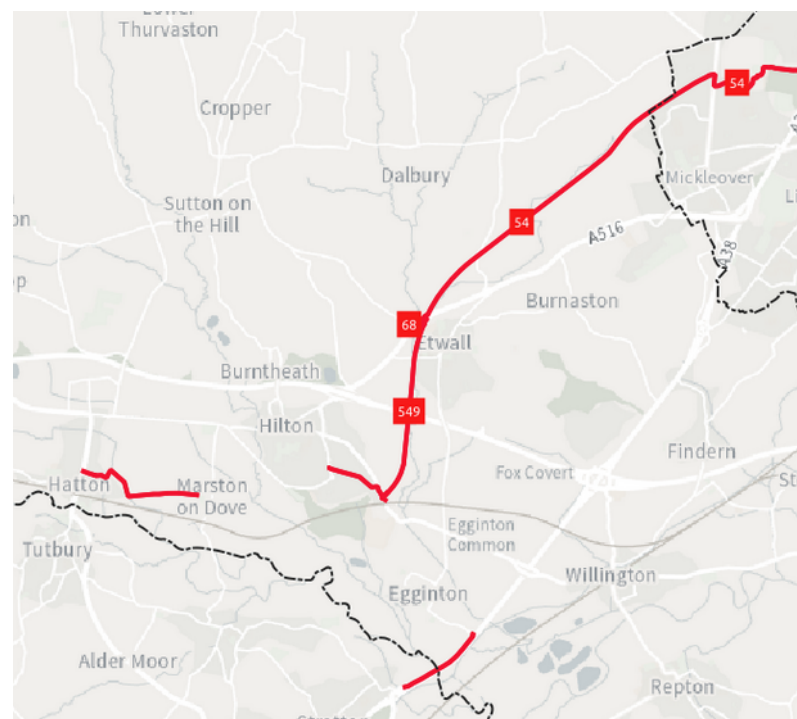
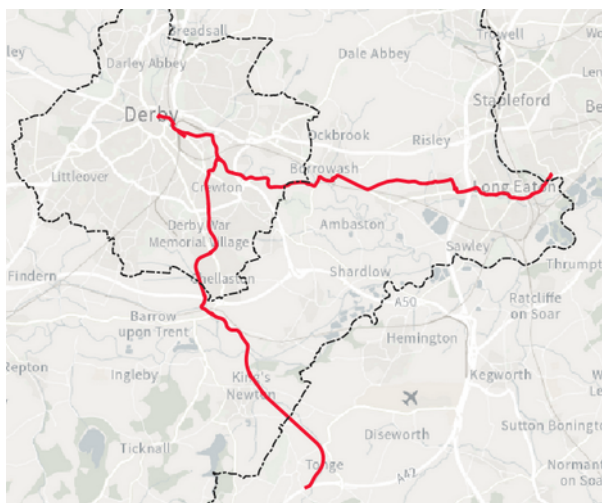
<https://millenniumtimetrail.wordpress.com/>

<https://www.sustrans.org.uk/national-cycle-network/millennium-mileposts/> (not complete)

Clyde Hinton (Matlock) is an “expert”

Numbering

- After (and sometimes before) the removal exercise, a lot of the numbering doesn't make sense.



Mapping accuracy

- Sustrans NCN mapping errors
 - Out of date
 - Chester Green flood defence work
 - Friargate one way system
 - Inaccurate original plotting
 - Breadsall greenway
 - Mickleover Meadows
 - How to deal with long term closures
 - Darley Abbey bridge
 - St Mary's Bridge

Accuracy

- OpenStreetMap (OSM)
 - Open, updated by volunteers
 - Important as used by (nearly) all cycle routing software
 - OpenCycleMap <https://www.opencyclemap.org/>
- Something of a “bee in my bonnet”
 - Compared Sustrans NCN and OpenStreetMap NCN
 - Working with Sustrans GIS team and network managers to fix errors
 - Encouraging OSM volunteers to fix errors
- <https://dent.org.uk/sustrans/sustrans-ncn-inconsistences/>

Vandalism

- Benches
- Breadsall Station
- Graffiti



Recent improvements



- Trent & Mersey canal
- Micklegate Meadows
- Egginton Bridge



Future Plans?

- Little Eaton Greenway (NCN extension?)
 - Derbyshire have funding
- Darley Abbey to Little Eaton (NCN 54)
 - Sustrans activation project
 - Design work funded by National Highways
 - A38 Junctions delay causing cycleway delay
- Riverside Path (NCN 6) ?
- Mickleover (NCN 54)
 - New estate with rerouted NCN 54 through
 - Toucan crossing on Station Road
- Current Sustrans focus to improve existing NCN, not add new

Summary

- Great infrastructure
- Supported by DfT
- Improvements being made
 - But too slowly!
- Sustrans always looking for new volunteers for the NCN
 - volunteers-midseast@sustrans.org.uk